

Bike/Ped Initiatives in Virginia Beach

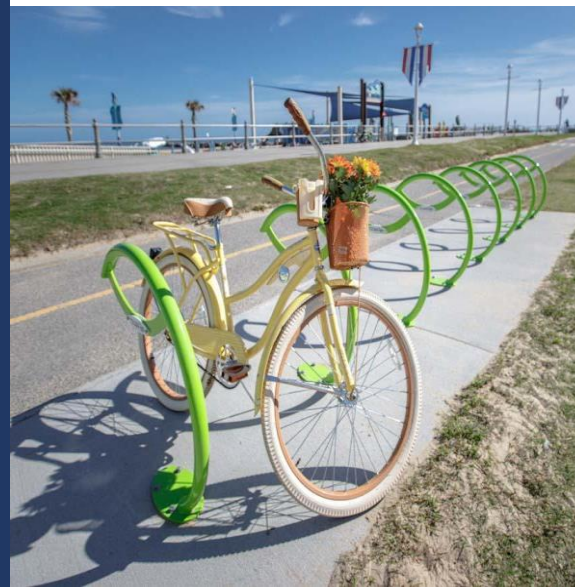
VASITE Annual Meeting
June 13, 2024

WALTER T. CAMP, Chair
VB Active Transportation Advisory Committee
WTCLegal-ATAC@yahoo.com

STEVE LAMBERT, Planner III-Active Transportation
Parks & Recreation Department
slambert@vb.gov



CITY OF
VIRGINIA
BEACH



Advancing VB's Bike/Ped Network, Together

Method

- Complete Streets Policy
(new construction & repaving existing)
- Greenway (non-road) Projects
- Public Redevelopment
- Open Space Projects
- Private Development
- State & Federal Projects

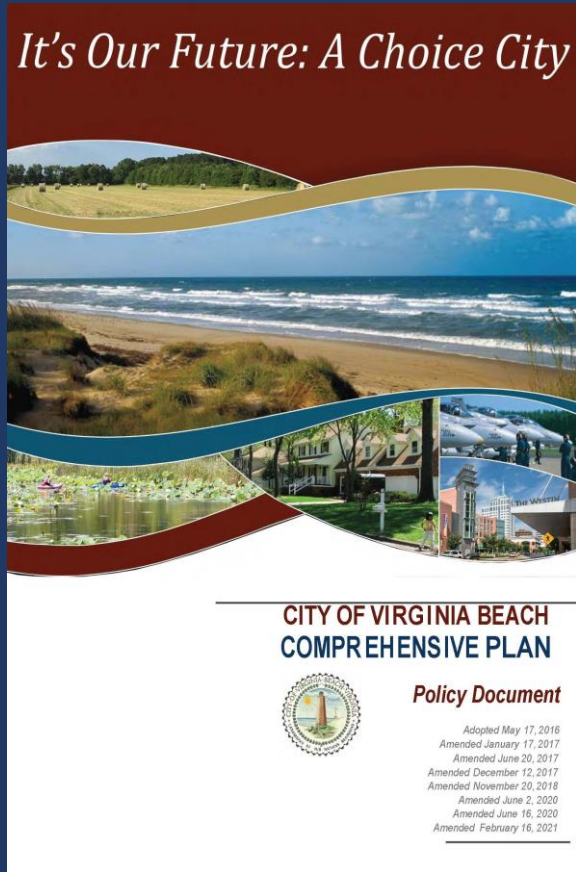
Lead Agency

- VB Public Works
- VB Parks & Recreation
- VB Econ. Dev. & Pub. Utilities
- OSAC and VB Parks & Rec.
- VB Planning Commission
- Wildlife Refuge & 2 State Parks

Active Transportation Advisory Committee

- Reports to City Council, advises on AT Plan implementation
- Established 20 years ago as Bikeways & Trails, pedestrians added 2022
- Membership
 - 9 Residents (voting members)
 - 3 Liaisons – City Council, Planning Commission & Parks Commission
 - 2 High School Students
 - Assigned Points of Contact from School System, Police & Other Boards
- Interacts Directly with: the public, city depts/agencies, businesses, non-profits, schools, other levels of government, elected officials, *and others*

Comprehensive Plan



2016 Comp Plan Being Updated

Key Focus – Bike/Ped Connectivity

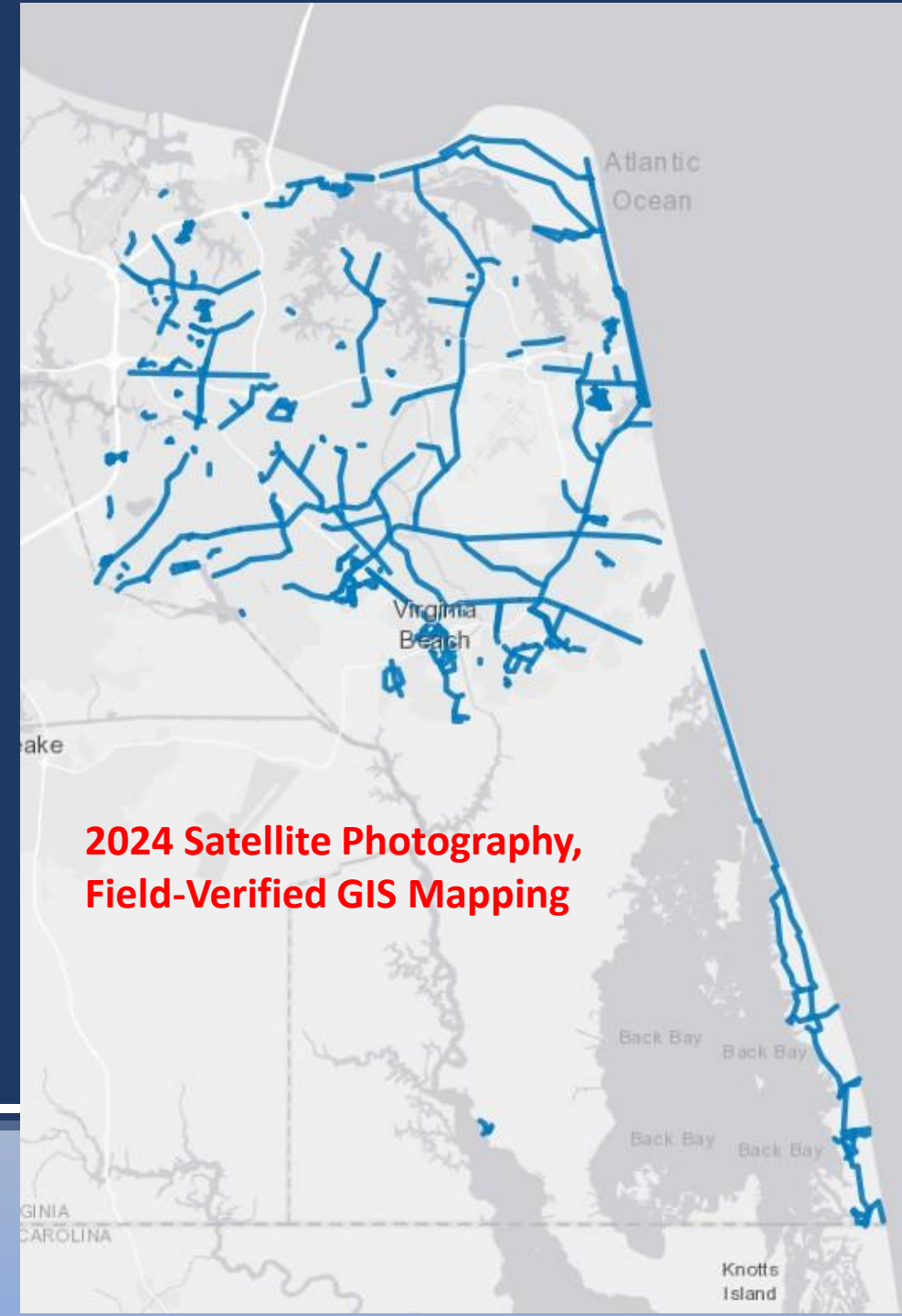
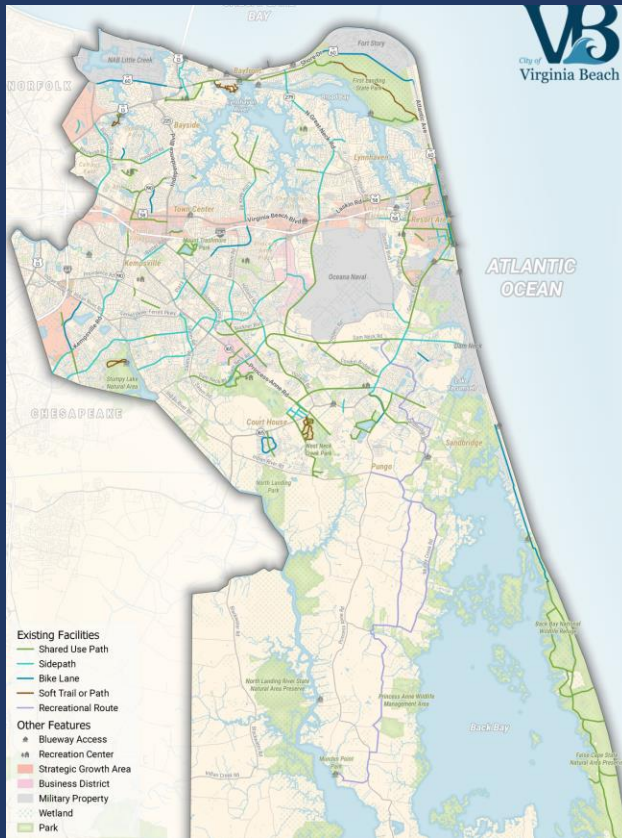
Master Transportation Plan section revisions too
Bikeways & Trails component since 1981

Updated as Active Transportation Plan in 2021



Current Facilities

2021 Active Transportation Plan Existing Conditions Map



VB Trail – Spanning the City



Newtown Transit Hub

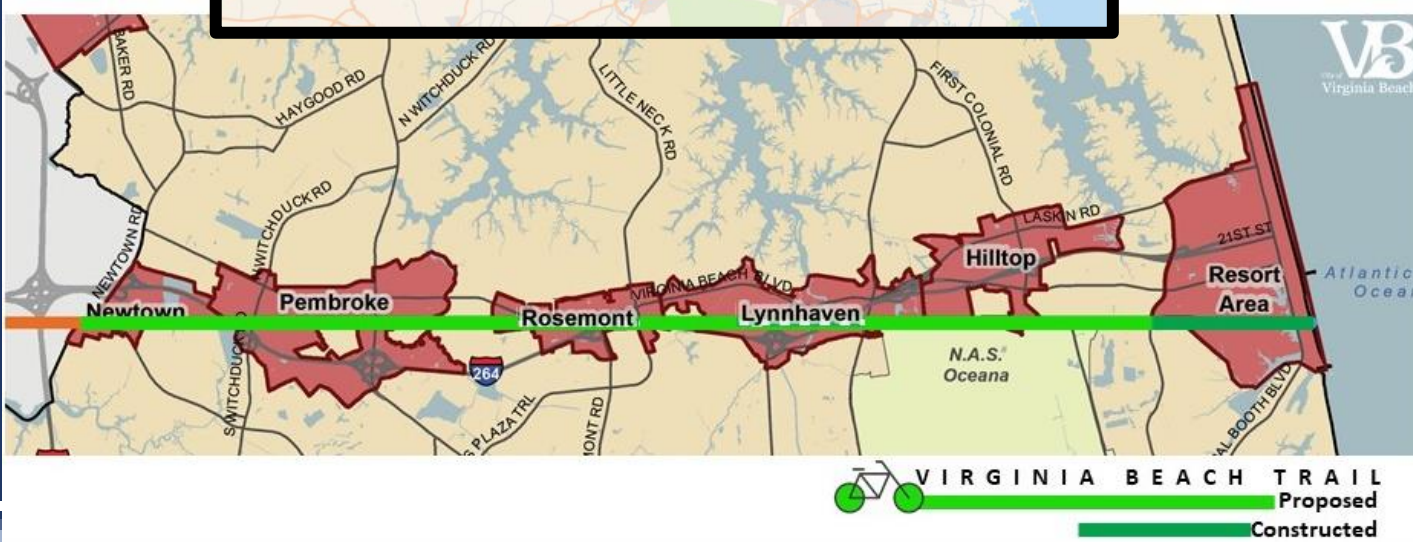
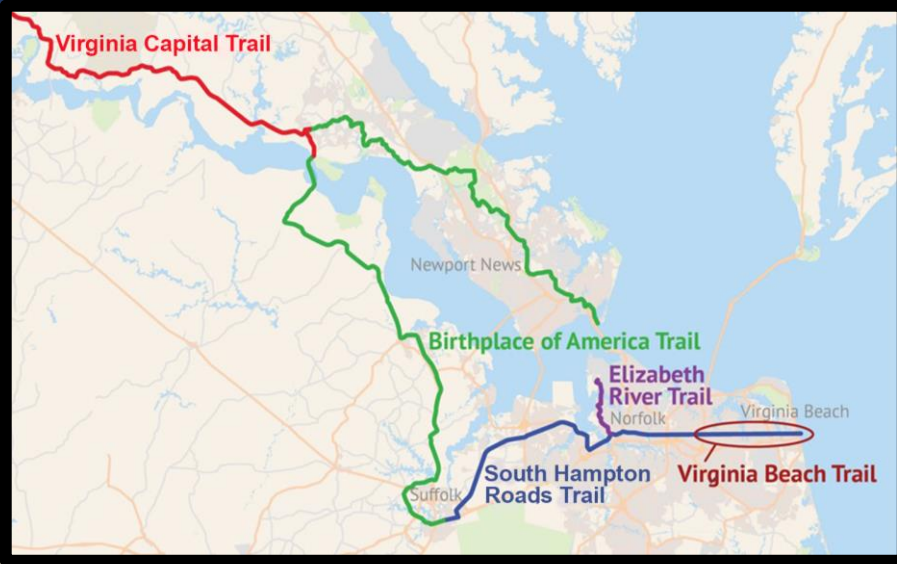


Town Center

Rudee Park



Virginia Beach Trail



#1 Priority Project in ATP
 In City-Owned ex-NSRR Corridor
 14' wide path in 66' right of way
 12 miles (1.5 built + 3.2 funded + 7.3 gap)
 In City Plans since 1981



CITY OF
**VIRGINIA
 BEACH**

Virginia Beach Trail

Phase 1 = \$19.5M Project

- \$14.9M USDOT SS4A Grant
- \$3.9M local share (20%)
- Bike/Ped bridge over 10 lanes of Independence Blvd
- 3.2 miles of shared use path & infrastructure
- Dominion transmission line rebuild alongside



Will Link Together

- Neighborhoods
- Schools & Libraries
- Workplaces
- Transit Stops
- Dining & Shopping
- Parks & Other Trails
- Historic/Cultural Sites
- Entertainment Destinations



VB TRAIL UPDATES

12/21/23

- ① **Phase 1 - Funded - Newtown Transit Station to Town Center**
 - 3.2 miles funded shared-use path
 - Design & Engineering scheduled for FY23-24
- ② **Phase 2 - Planned - Town Center to S. Plaza Trail**
 - 2.6 miles planned shared-use path
 - Updated Preliminary Engineering currently underway
- ③ **Phase 3 - Planned - S. Plaza Trail to Birdneck Road**
 - 5.1 miles planned shared-use path
 - Cost estimates to be updated FY 24-25
- ④ **Phase 4 - Existing - Norfolk Ave Trail & Pacific Avenue Bridge - Birdneck Road to Rudee Loop Park**
 - 1.7 miles existing shared-use path & side path



Some Key Rationales

- Crash Reduction
- Recreation
- Transportation
- Social Equity
- Economic Development
- Public Health
- Public Transit Access
- Tourism
- Last Leg of Regional, State & Nat'l Routes



Roadways: 60+ Projects in CIP, > \$1B Total Value

Example: I-264 Interchange Underpass Upgrades



Before: Southbound Independence, November 2020



After: Southbound Independence, April 2022

Economic Development Bike/Ped Projects

Types of Initiatives

Master Planning

Project Advocacy

Urban Revitalization Projects

Corporate Build-Outs

Major Examples

Resort Area Mobility Plan

Virginia Beach Trail

Atlantic Avenue Reimagined

Amazon – New Suburban Connector Road



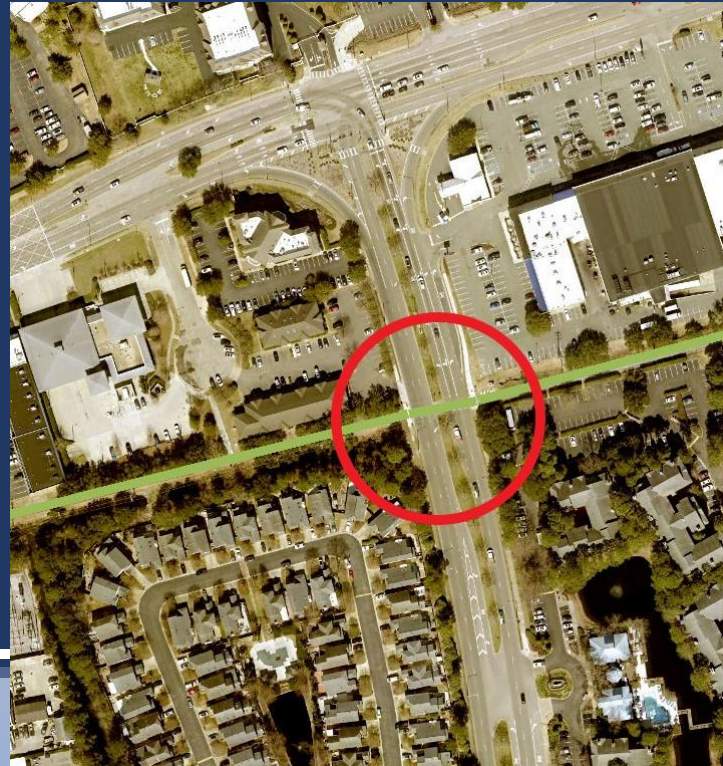
ATLANTIC AVENUE



CITY OF
VIRGINIA
BEACH

Traffic Engineering Safety Initiatives

- Audible Pedestrian Signals
- HAWK Signals
- Leading Pedestrian Interval on Walk Signals
- Road Diets



What is a HAWK Signal?

A photograph of a HAWK signal at a crosswalk. The traffic lights are red, and a sign above them reads "CROSSWALK STOP ON RED". A pedestrian crossing sign is visible below. The background shows trees and a clear blue sky.

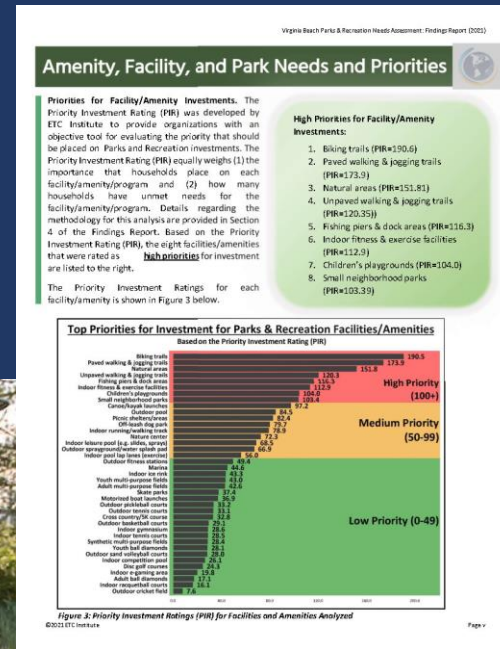
A **HAWK** (High-Intensity Activated crossWALK)

Parks & Recreation Initiatives

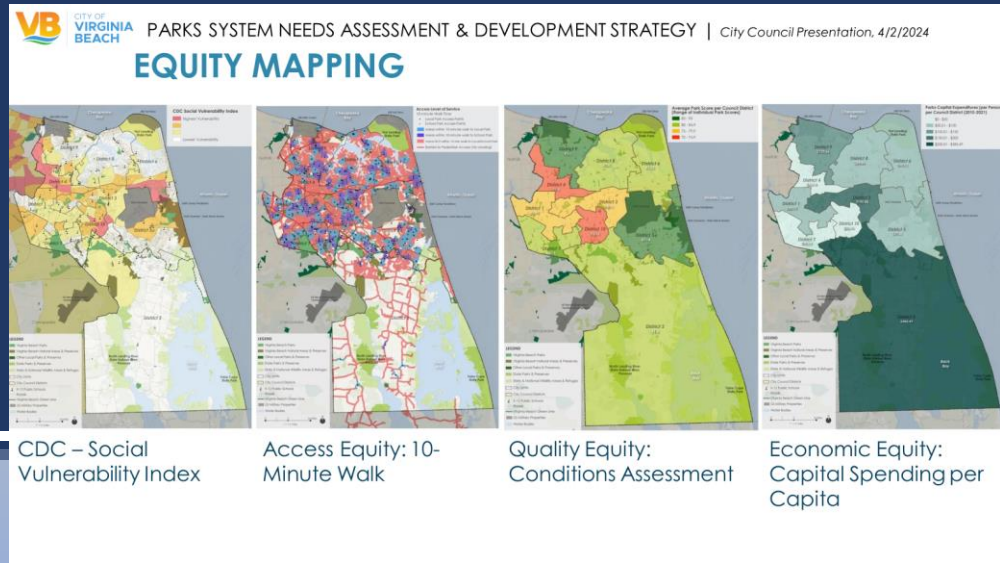
\$1M/year recurring CIP funding (buys ½ mile?)

- Neighborhood non-roadway connectors
- 4 legacy projects in process
- Maintenance has separate CIP

Biannual Resident Needs/Priority Survey
Equity-Based Facility Needs Assessment



Thalia Creek Greenway Phase II



Planning Commission Partnership

- Comprehensive Plan is Policy, not Law
 - Commission has discretion on Applications
 - Training for New Appointees
 - ATAC Briefed Commission on AT Plan
 - Working Together on Comp Plan Update
- Procedural Tools
 - Early plan reviews by Public Works and Parks staff
 - AT Section in Planning Staff Reports
 - ATAC reviews Agenda Applications, attends meetings
 - Planning Commission Member appointed to ATAC
- ATAC Testimony to Support Plans & City Traffic Engineer



Funding, Education & Advocacy Efforts



Bike/Ped Support Initiatives

ATAC Roles (*Augment, Assist, Connect*)

Local Appropriations & Annual Budget	Council Advisory Letters & Personal Advocacy
Robust Grants Program	Community Support Component/LoS Portfolio Provide Photos, Draft Text, Application Review
Legislative Efforts	Support VB Legislative Liaison-Laws & Funding
Private Philanthropy	Identify Donors, Coordinate with Foundation
Public Awareness	Site Tours, Films, Media Stories, Web Content Support at B/C Meetings, Town Halls, Etc
Maintenance	Assist w/Field Surveys, Prioritize Repairs

But Wait There's More!

- Health Dept. Intersection Study
- Bike Parking & Beach Access
- Safe Routes to School
 - Crossing Guard Appreciation Day
 - Bike/Walk/Roll to School Events
- National Bike Month & Holiday Lights Ride
- Parks as Alternatives to Roadside Recreation
 - Innovative Stormwater Park & Skateparks
 - Cross Country Trails – local use & sports tourism
 - Crowd-sourced 5-mile mountain-biking park





Questions?



STEVEN A. LAMBERT
Planner III-Active Transportation
City of Virginia Beach Parks & Recreation Department
slambert@vbgov.com
(757) 385-4310

WALTER T. CAMP
Chair
VB Active Transportation Advisory Committee
WTCLegal-ATAC@yahoo.com
(757) 576-1006